

Tutorial for Adobe Premiere Pro

Making the Saleen Race Car

Import all footage out of the "Adobe Premiere Pro Sample Project NTSC" folder, located under [\\hydrogen\teched_Tutorials\Adobe Premiere Pro Sample Project NTSC](#) to create an introduction to the Saleen race car that highlights the interior and exterior features and the name of the car. In this project you will have some basic instruction as to clip placement and camera angles, but you do have some creative freedom in clip utilization. This is a building skills project that will enable you to practice the basics of the editing process. At the end, the project should be around 43 seconds in duration plus/minus a second or two. The audio file fits the video according to that time frame. The Photoshop files should be imported as a sequence.

Original clip order	Full Length	Notes:
1. Saleen_open.avi Butt edit into next	00:00:06;15	Use in its entirety.
2. Saleen_Car.avi Butt edit into next	00:00:00;21	Use in entirety.
3. Saleen_Car01.avi Butt edit into next	00:00:15;29	We will use most of this footage but you will have to speed it up to around 500%. Set an in point some where behind the headlights, out at the end of clip. Should be a little more than two seconds in actual duration.
4. Saleen_Car09.avi Butt edit into next	00:00:08;06	Use about a second of a close-up of the hood.
5. Saleen_Car03.avi Additive Dissolve into next	00:00:11;01	set an in point just before the headlight turns off until end. Reverse the speed so it appears the headlight turns on instead of off.
6. Saleen_Car10.avi	00:00:08;26	Use around two seconds of this clip coming out of the fog and on.

Cross Dissolve into next

7. Saleen_Car08.avi 00;00;08;23

Use nearly all of this clip. Speed change to 300%.

Cross Dissolve into next

8. Saleen_Car02.avi 00;00;06;04

Moving into the interior of the car, use the second half of this clip to show the shifter up through the instrument cluster.

Cross Dissolve into next

9. Saleen_Car06.avi 00;00;06;19

Use a little more than two seconds of this clip out of the middle.

Cross Dissolve into next

10. Saleen_Car04.avi 00;00;05;17

Use around two seconds of this clip, showing a little pan around the wheel. Speed to 125%.

Cross Dissolve into next

11. Saleen_car05.avi 00;00;07;08

Use about a three plus second pan around the back to show the engine. Change speed to 150%.

Cross Dissolve into next

12. Saleen_Car07.avi 00;00;06;07

Use about 4 seconds out of the middle of this clip. Use around a two second cross dissolve out to black to end the video portion of the project. This clip must be scaled in order to get rid of photo equipment in background.

Butt edit into next (Graphic Portion)

13. Saleen_Logo_Layers

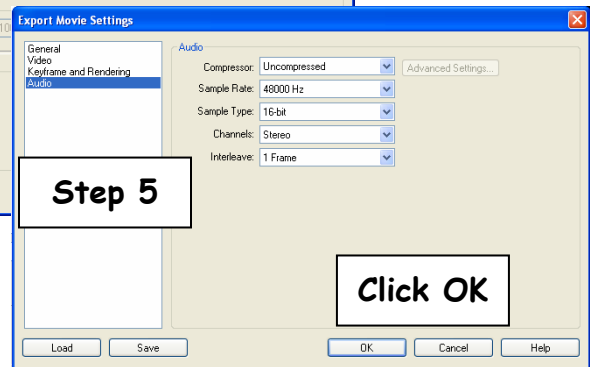
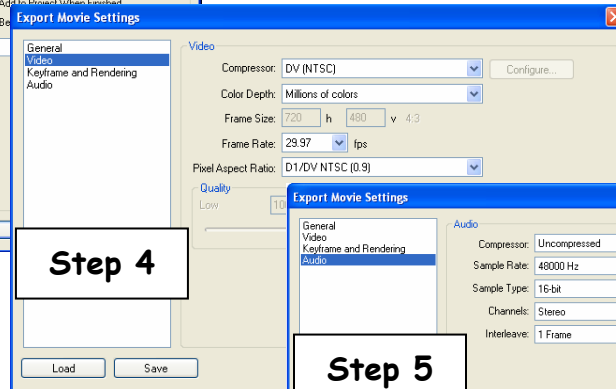
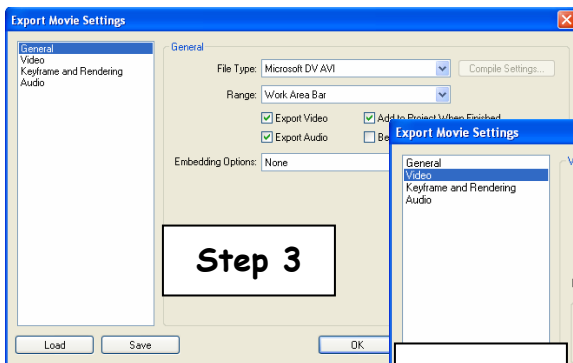
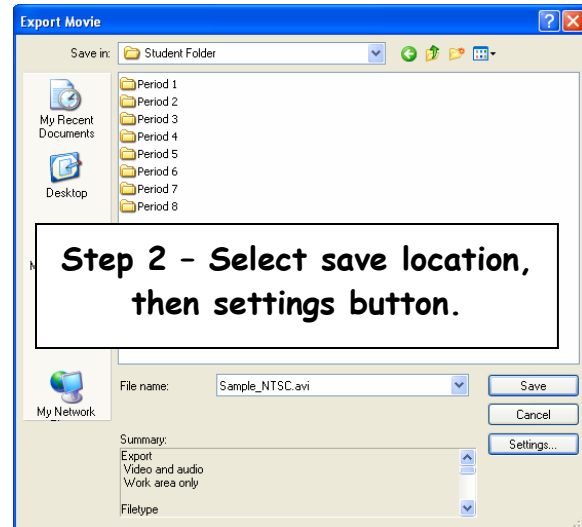
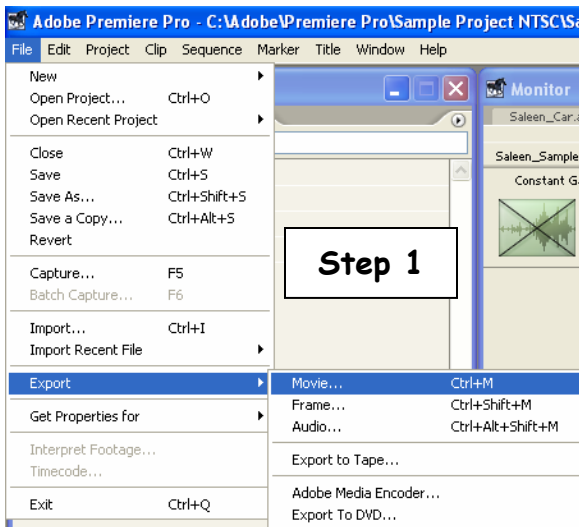
Using these Photoshop layers, imported as a sequence, animate their position in about five seconds. The logo should slide in from off screen right. The Name slides in from off screen left. Both end in the

middle of the screen, before fading out to black with a two second cross dissolve.

14. Saleen_Ambient_Bed.wav

To complete the video, use the audio file with a constant gain at the beginning to fade it in, and another long constant gain (around 3 seconds) audio transition to fade it out.

Export the movie using the following settings:



PA standards met: 1.1.11.f, 1.6.11.a, 2.2.11.b, 2.2.11.d, 2.3.11.a, 3.6.10.b, 3.6.12.b, 3.7.10.b, 3.7.10.c, 3.7.10.d, 3.7.10.e, 3.7.12.a, 3.7.12.c, 3.7.12.d